

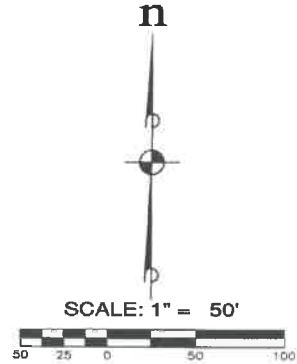
SUNCADIA - PHASE 3 DIVISION 14 (TUMBLE CREEK)

A PORTION OF SECTIONS 14 AND 23, TOWNSHIP 20 NORTH, RANGE 14 EAST, W.M.
 KITTITAS COUNTY, WASHINGTON
 ASSESSOR MAP NUMBER 20-14-14050-0021, PARCEL ID NUMBER 950057

AUDITOR'S REFERENCE

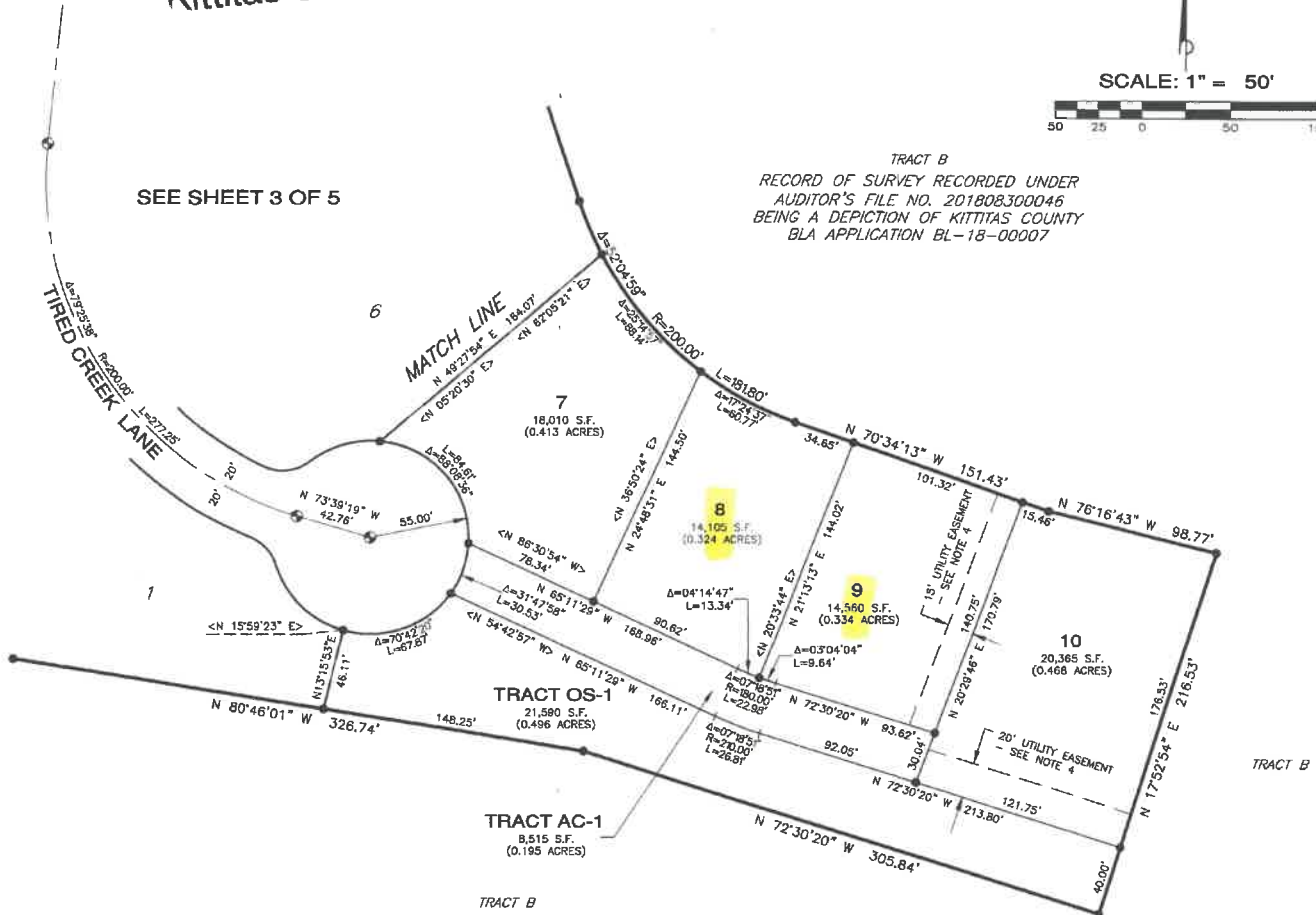
LP-18-00002

RECEIVED
 NOV 13 2019
 Kittitas Co. CDS



SEE SHEET 3 OF 5

TRACT B
 RECORD OF SURVEY RECORDED UNDER
 AUDITOR'S FILE NO. 201808300046
 BEING A DEPICTION OF KITTITAS COUNTY
 BLA APPLICATION BL-18-00007



LEGEND

- ⊙ = SET SURFACE BRASS CAP, STAMPED "LS 44925"
- = FOUND CORNER AS NOTED
- = SET 5/8" REBAR WITH CAP STAMPED: "ESM LLC 44925 45782". IN THE EVENT THAT A NON-REMOVABLE OBSTACLE PREVENTS SETTING THE ACTUAL PROPERTY CORNER, A STRAPPED 2" ALUMINUM CAP WILL BE SET ON THE PROPERTY LINE AS AN OFFSET TO THE ACTUAL CORNER WITH THE DISTANCE TO THE ACTUAL CORNER NOTED THEREON.
- Δ = DELTA
- R = RADIUS
- L = ARC LENGTH
- (R) = RADIAL BEARING
- < > = RADIAL BEARING AT LOT CORNER
- << >> = MONUMENT TO MONUMENT DISTANCE

RECORDING CERTIFICATE

FILED FOR RECORD AT THE REQUEST OF KITTITAS COUNTY BOARD OF COMMISSIONERS, THIS 1st DAY OF November, A.D., 2018, AT 25 MINUTES PAST 2 O'CLOCK P.M., AND RECORDED IN VOLUME 18 OF PLATS, ON PAGES RECORDS OF KITTITAS COUNTY, WASHINGTON.

BY: [Signature] DEPUTY COUNTY AUDITOR
Jerald V. Pettit KITTITAS COUNTY AUDITOR

AUDITOR'S REFERENCE: 201811010029



ESM CONSULTING ENGINEERS LLC
 33400 8th Ave. S, #205
 Federal Way, WA 98003
 www.esmcivil.com
 FEDERAL WAY (253) 636-6113
 EVERETT (425) 297-9900

Civil Engineering Public Works	Land Surveying Project Management	Land Planning Landscape Architecture
DATE: 2018-10-18	JOB NO. 995-787-017-0100	
DRAWN BY: C.A.F./R.F.G.	SHEET 4 OF 5	